

**THIRTEEN
TEN** G STREET

1310 G ST NW | WASHINGTON, D.C.



GREAT RETAIL OPPORTUNITY IN D.C.

AVAILABLE **FOR LEASE**

AN EXPANSIVE STOREFRONT ON G STREET

STEPS FROM THE WHITE HOUSE

1310 G Street offers an exceptional storefront and the potential to join the rich retail co-tenancy of downtown Washington D.C. This location draws in all crowds from locals to visitors.



**2,360 SF
FOR LEASE**



**ON-SITE
PARKING**



**DENSE RETAIL
COMMUNITY**



**STREET LEVEL
BRANDING**



ON THE STREET THAT NEVER SLEEPS

BUSTLING D.C. NEIGHBORHOOD

1310 G is positioned just three blocks from the White House with convenient connectivity to both Penn Quarter and the East End. This area offers never ending excitement at all hours of the day.



**105,735
POPULATION**
1 MILE RADIUS



**54,995
HOUSEHOLDS**
1 MILE RADIUS



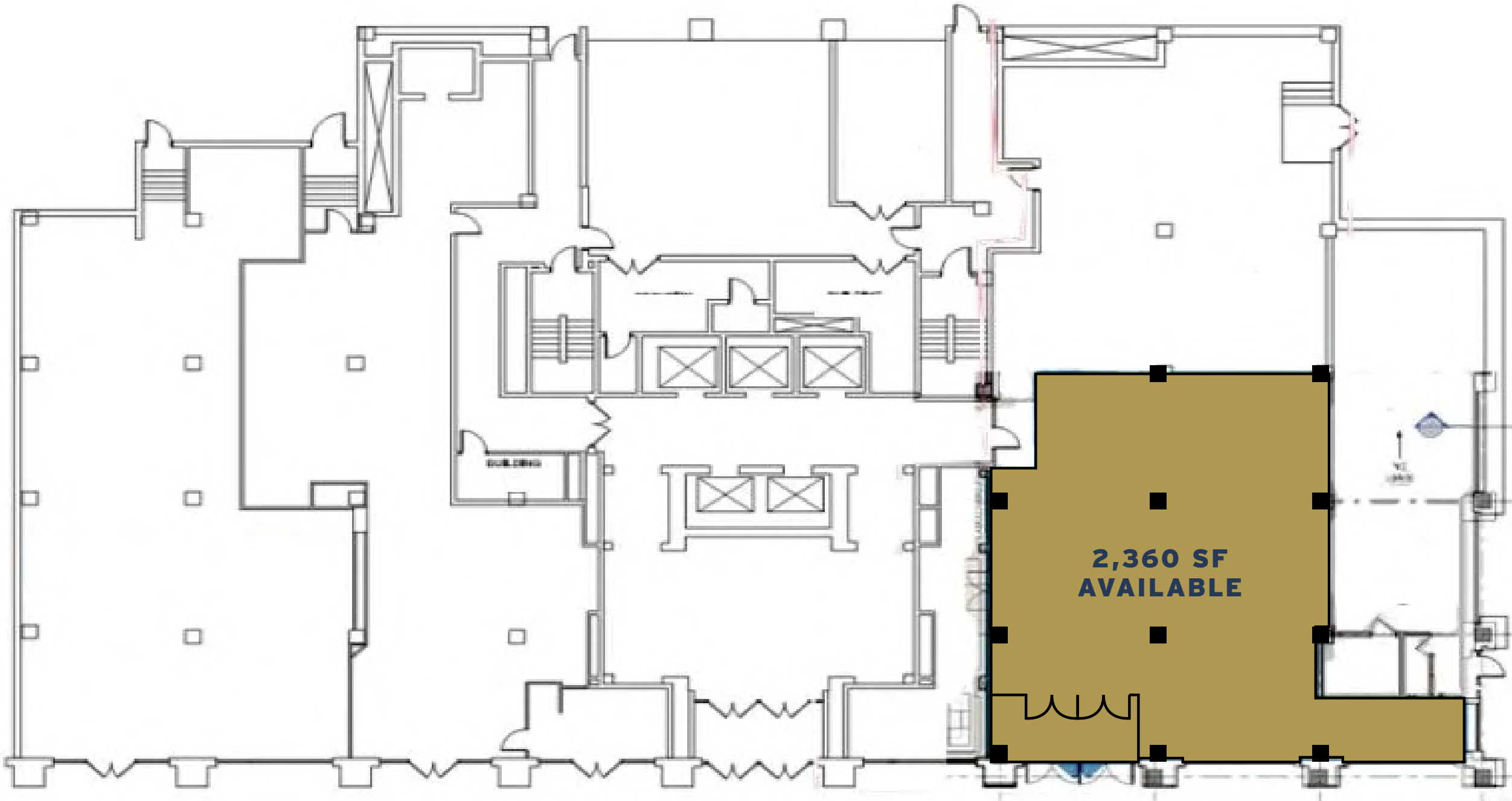
**\$149,027
AVG. INCOME**
2 MILE RADIUS



**443,378 DAYTIME
EMPLOYMENT**
2 MILE RADIUS



**FLOOR
PLAN**



CENTRALLY LOCATED IN DOWNTOWN DC

ESTABLISHED RETAIL MARKET

East End is one of D.C.'s most well established retail hubs, with great restaurants, big name retailers, and everything in between.

75+ RESTAURANTS

45+ RETAIL SHOPS
TO EXPLORE

10+ HOTELS
NEARBY



RETAIL OPPORTUNITY FOR LEASE



**THIRTEEN
TEN** G STREET

**CONNOR
MCCARTHY**

202.775.7027
connor.mccarthy@transwestern.com